

# What We Do:

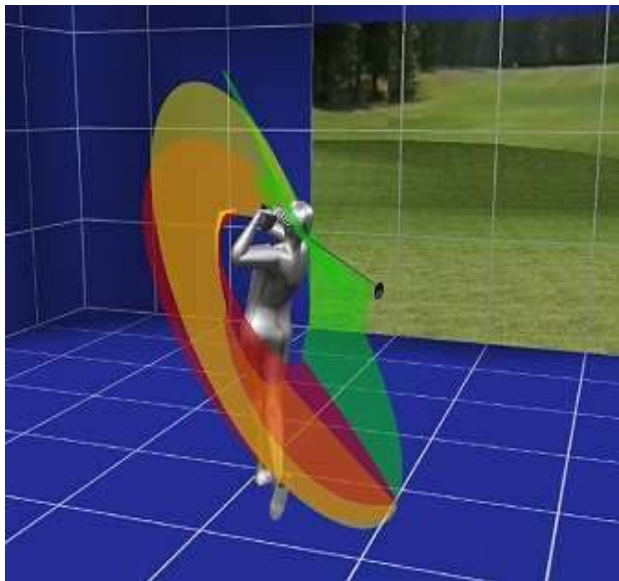
Using a state-of-the-art Motion Analysis Technique (MAT) system incorporating highly advanced computing and six-camera motion capture technology, our PGA certified professionals provide a swing analysis for golfers of all abilities. The resulting data is then used to recommend models and modifications of many brands of golf clubs to match individual swing characteristics in a manner previously available only to touring professionals. Club recommendations are immediately validated at the practice facility using our state-of-the-art launch monitoring equipment. In most cases, new custom-fit, factory-built clubs are delivered in a few days.

[www.cecc.com](http://www.cecc.com)

click on *Fitting Center*

Or

Call the Pro Shop at (503)285-8354



*3D Motion Capture | Personal swing analysis*

*Club recommendation | Validation demo*

### Clubs we fit

*Taylormade | Titleist | Ping | Mizuno | Adams*

### Lab Rates

*2-br. Total fit experience: \$200*

*1-br. Lab Lesson \$100*

*Columbia Edgewater Country Club Performance Lab*

*2220 NE Marine Dr. Portland OR 97211*

*503.285.8354*

*www.cecc.com*



*Given to the Game*

# Columbia Edgewater Country Club Performance Lab

**Golf's Ultimate Fitting  
Experience!**

